

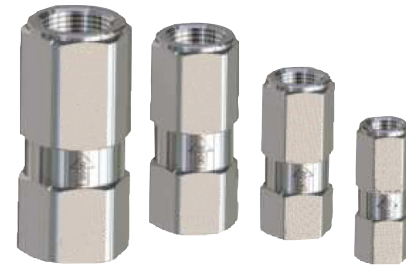
GENERAL PUMP *A member of the Interpump Group*

Check Valves

Stainless Steel Check Valves

FEATURES

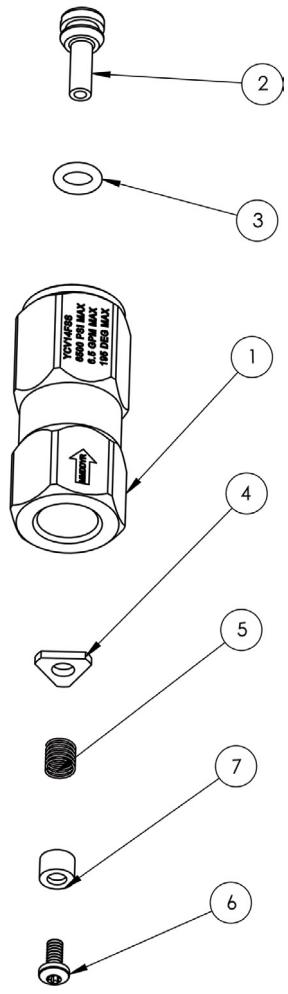
- Light Cracking Pressure
- Stainless Body with Stainless Wetted Parts
- O-ring on Poppet for a Leak Proof Seal
- Solid Body Construction, Won't Come Apart During Installation



SPECIFICATIONS

Part Number	YCV14FSS	YCV38FSS	YCV12FSS	YCV34FSS
Body Material	Stainless Steel			
Maximum Volume	6.5 GPM	10.5 GPM	21.0 GPM	48.0 GPM
Maximum Discharge Pressure	6500 PSI			
Maximum Fluid Temperature	195° F			
Port Sizes (BSP-FxF)	1/4"	3/8"	1/2"	3/4"
Cracking Pressure	5.8 PSI	5.8 PSI	4.4 PSI	3.0 PSI
Shipping Weight	.5 lb			
Length	1.85"	2.13"	2.60"	3.50"

PARTS LIST



Item	Part #	Description	Qty
1	520239	Body, Checkvalve, YCV14FSS	1
	520240	Body, Checkvalve, YCV38FSS	
	520241	Body, Checkvalve, YCV12FSS	
	520242	Body, Checkvalve, YCV34FSS	
2	520235	Piston, Checkvalve, YCV14FSS	1
	520236	Piston, Checkvalve, YCV38FSS	
	520237	Piston, Checkvalve, YCV12FSS	
	520238	Piston, Checkvalve, YCV34FSS	
3	701009V90	O-ring, Viton, YCV14FSS	1
	701011V90	O-ring, Viton, YCV38FSS	
	701111V90	O-ring, Viton, YCV12FSS	
	701113V90	O-ring, Viton, YCV34FSS	
4	540081	Retainer, YCS14FSS	1
	540082	Retainer, YCS38FSS	
	540083	Retainer, YCS12FSS	
	540084	Retainer, YCS34FSS	
5	720062	Spring, YCV14FSS	1
	720063	Spring, YCV38FSS	
	720064	Spring, YCV12FSS	
	720064	Spring, YCV34FSS	
6	201008	Screw, 4-40 UNC, T8, YCV14FSS	1
	201009	Screw, 8-32 UNC, T15, YCV38FSS	
	201011	Screw, 1/4-20 UNC, YCV12FSS	
	201011	Screw, 1/4-20 UNC, YCV34FSS	
7	520347	Spring Stop, YCV14FSS	1
	520348	Spring Stop, YCV38FSS	
	520349	Spring Stop, YCV12FSS	
	520349	Spring Stop, YCV34FSS	



General Pump
is a member of
the Interpump Group

Ref 300880 Rev. C
01-18

